

Magyar Pumi Klub

“A Pumi Államilag Elismert Tenyésztő Szervezete - ETSZ”



A Magyar Ebtenyésztők Országos Egyesületeinek Szövetsége
(mint az FCI) tagja
1035 Budapest, Szél u.10.
www.pumiklub.eu



Dear Conformation Judges, and interested parties

Please except with an open mind the following material, with which we intend to help in the uniform judging of the breed and that emphasizes the observations of the standard.

In the case of the Pumi, similarly to many other breeds, lately the so called “modern” type has gained in popularity, which however deviates from the standard description. The filtering out of the non-desirable traits during the judging of appearance would be desirable not only during breeding, but during conformation shows as well.

The problem is caused most cases by the misinterpretation of the term “terrier type”, therefore the Kerry Blue terrier is often considered as the ‘model’ for both the anatomy and the formation of the coat. We must exercise care to maintain the breed as it was originally described so it would not become a parody of a medium-sized terrier.

The example below indicates the most typical case:

Recently observed undesirable trait is the complete scissoring of the dog’s coat, which often happens ringside, and the freshly groomed dog is being shown. The standard specifically stresses that the scissoring of the entire coat is not desirable. To obtain the expected coat quality, it is not necessary to have a whole-body combing, cutting and drying. Besides the general grooming it is sufficient to prepare the dog for a show by following the instructions drafted in the standard. The scissoring and shaping of the coat over the entire body is a solution that changes the look of the breed. It is expedient only for covering up faults, and often it is done for that purpose - thus the necessity for a thorough examination.



On the first photo is a dog with a coat adjusted for a show, while the second photo shows the same dog with the original coat per the standard.



On the photograph to the left one can see the “show” or “modern” pumi with a one-year coat, while the photo on the right shows the traditional, according to the standard pumi, also with a one-year coat.

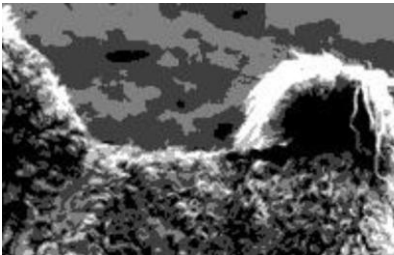
Sometimes the idea that a whole-body scissoring is undesirable is misunderstood, since it is evident that even the coat of “traditional” pumi is clipped. However, it is natural that once a year – as do the shepherds as well – we trim the coat, but this is not the same as preparation for a show.

On the head, the ratio (2/3:1/3) of the erect portion and the downward pointing tip of the ear is a highly important trait of the breed. It can be observed that often the Kerry Blue Terrier-type heavily down-turned (ratio of 1/2 : 1/2) ear is given preference.

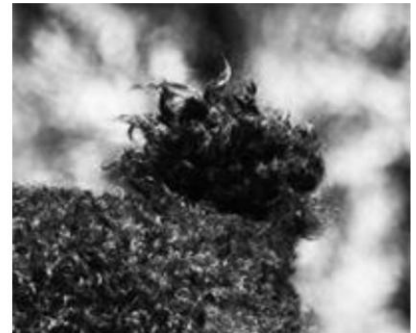
The appropriate medium length and slightly arched, well muscled neck, is smoothly merges with the pronounced withers that follows the top-line and slightly slopes towards the rear. This is structure is extremely important for the elegant appearance of the dog. A head that sits almost on the body (short neck), as is often observed, is undesirable.



The topline shaping by optical means, that is the cosmetically provided steep line from nape to tail, is also a completely foreign appearance. Related to this, it can be also observed that dogs shown with "boxer-like" hind legs with a steeper sloping topline are given preference.



It is necessary to observe the standard for the following as well: the topline is straight, the body is square.



The arching (setting) of the tail and the way it is held has been given less importance during the judging process. As a result, there are higher number of winners with clearly puli-type tails, which is a big mistake.

Finally, the judging of the gait. Since it is a herding, working breed, one of the important parts of the Pumis's judging should be its gait. Therefore, judges should request more than a single circle in the ring for the dog and handler to move around, so that the anatomical properties could be better observed and stressed.

The above observations represent the most frequent conflicts during the judging process. Consequently, we respectfully request all conformation judges, to review these comments and consider them for their judging process.

Budapest, 14-11-2014

Pumi Club of Hungary
(the official, state acknowledged organization)

behalf of
Presidency and Breeding Council

Árkosi József
president

